

### GHV MISSION

To educate, excite, and equip an inclusive population of elementary students to pursue a sustainable world through a hands-on program in bioscience, urban agriculture, and nutrition and dietetics with the following goals:



Introduce children to a rich, hands-on learning experience that improves bioscience education



Increase student understanding of proper nutrition, and encourage families to adopt healthier everyday habits



Lead more students to careers in bioscience to meet the pressing need to fill emerging jobs in science and agriculture

### URBAN EDUCATION ALLIANCE

More than 1,500 students in the participating schools represent a diverse socio-economic and geographic spectrum. Reaching yet further, the Venture plans to employ state-of-the-art communication channels to share its programs with other elementary schools across the St. Louis region and beyond.

THE GREEN HOUSE VENTURE is a unique STEM program taught in a working urban agriculture environment, involving students from four elementary schools within south-central St. Louis that comprise the Urban Education Alliance:

ST. MARGARET OF SCOTLAND {Parochial}

MULLANPHY INVESTIGATIVE CENTER {Public Magnet}

TOWER GROVE CHRISTIAN ACADEMY {Christian}

LAFAYETTE PREPARATORY ACADEMY  
{Public Charter School}

### REALIZING THE DREAM

Looking back at the early days of THE GREEN HOUSE VENTURE to where we are today, it's tremendously gratifying to see the enormous strides we have made in delivering on our mission. Here are some of the highlights from the past year:

- Plans have been completed for the construction of the new Education Center, and a groundbreaking ceremony is planned for this fall to get the building underway.
- Dr. Donald Stump has stepped down from his leadership role while remaining involved in numerous Venture activities – and key new players join the team.
- Students are taking part in a major bee study being conducted under the direction of Dr. Aimee Dunlap from the University of Missouri-St. Louis.
- Media coverage has expanded, generating greater awareness of the Venture throughout the community.
- Community Partners, volunteers and interns continue to play a vital role in our success, making valuable contributions to student learning and embankment maintenance.
- Classroom outreach efforts involve the entire family in learning about bioscience and urban agriculture.

Learn about these and other important developments in this year's annual report.



# CURRICULUM AND CLASSROOM OUTREACH

Our fourth, fifth, and sixth graders are really getting into the classroom activities! We keep the curriculum flexible so we can jump on interesting opportunities as they pop up. The fourth grade is all about seeds – reading the packets, getting them to sprout, planting outside, and then harvesting. The fifth grade works with cold frames. They plant inside and keep an eye on the temperature differences between inside the frame and out in the open, as well as plant growth. Sixth grade is where we get into experiments.

For example, the sixth graders experiment with soil components. They mix different proportions of humus (that nutrient-rich organic matter), silt (the stuff you find along rivers), and sand. They make guesses about which mix would help plants grow the best. They keep one batch with equal parts of everything as a control, and then vary the ratios in the other batches. They plant seedlings and put them in Computerized Growing Chambers, water them regularly, and measure how much they grow each week. After six weeks, they look at the results.

They have fun pulling the plants out of the soil and taking them apart, noticing that the roots are almost as long as the plant above ground when straightened. They figure out that more humus means better plant growth, and more sand means less successful plants. Each student writes up the experiment like they would for science class, and they enjoy that it is a relaxed, no-pressure kind of writing. GHV gives middle-schoolers a chance to learn in the classroom without the stress of grades.

A key part of our Classroom Outreach is keeping parents in the loop. After each lesson, Becky Finnegan sends a letter to the parents of the students involved. These letters go to the teacher, who then sends them home through the school's usual channels. This way, parents know enough to chat with their kids about what they did at GHV.

We always invite parents to visit the Terrace Garden and the Computerized Growing Chambers, and to follow GHV on social media. Parents can also ask questions, which our Master Gardeners answer, to help them grow things at home. This part of the program helps build a strong relationship between the school, families, and GHV.



# UP CLOSE AND PERSONAL WITH POLLINATORS



Photo by Jason Leung | Unsplash

Pollinators are very important for growing, not just at GHV but on farms and gardens everywhere. This past spring, students came to the Terrace to learn about all sorts of pollinators – bees, of course, but also butterflies, moths, wasps, beetles, and flies. They watched them in action in the Terrace Garden. They also learned how to spot bee nests in the ground, looking for a little mound of dirt around a small hole. A few weeks later, students got a chance to get “*up close and personal*” with bees.

This important learning experience is part of a larger effort being undertaken by University of Missouri-St. Louis, Associate Professor of Biology **Dr. Aimee Dunlap**, who has launched a multi-year study that will compare the nesting, foraging and pollination patterns of bees living at the Green House Venture's Embankment Greenway to that of bees living in rural areas.

Dr. Dunlap and two graduate students from University of Missouri-St. Louis showed students at the Terrace Garden close-up photos of pollinators, nets, and GoPro cameras. The photos were amazing, showing all the different places that a pollinator can carry pollen – sometimes, all over their bodies!

Students learned how to safely catch pollinators with a net: they learned the “*sweep and flip*” method to catch them in a net and then flip the net over so they couldn't get out. Once they got the hang of it, they searched the Terrace for pollinators. Several students managed to catch one.



George put the pollinator in a plastic tube so the students could see it up close. The bees were all released afterward – no bees were hurt during this activity! Students also helped set up GoPro cameras in different spots on the Terrace where they had seen pollinators. The cameras recorded for up to an hour and will likely result in an interesting video.

Experiences like this are fun for the students. We at GHV hope that students will be inspired to appreciate science and maybe even help make our world better by becoming scientists themselves someday.

# CULTIVATING THE FUTURE: COLLEGE INTERNS NURTURE GROWTH AT GREEN HOUSE VENTURE

College interns have long been an essential part of **THE GREEN HOUSE VENTURE**, bringing fresh knowledge, youthful enthusiasm, and meaningful mentorship to our mission of advancing bioscience and urban agriculture education for elementary and middle school students. This year, two interns – **Jenn Voss** and **Bella Ottolini** – showed the impact that dedicated college students can make in shaping the next generation's understanding of science and sustainability.



**Jenn Voss** began her journey with Green House Venture in February, shortly before graduating this May from the University of Missouri–St. Louis with a degree in Biology and Environmental Science, along with a Conservation Certificate. Originally from Oakville, Jenn was introduced to GHV by her professor, Dr. Dunlap, who connected her with co-founder Dr. Donal Stump.

The internship turned out to be an ideal fit, aligning perfectly with her passion for bringing agriculture and sustainable practices to urban youth.

*“It was rewarding watching the students working on the Terrace Garden,”* Jenn shared. *“Seeing their curiosity spark and watching the fruits of their labor was exciting.”*

During her internship, Jenn ensured the Growing Chambers were always functioning properly and worked with students to connect GOVEE sensors in the Cold Frames and Growing Chambers to their cell phones. This allowed students to track temperature and humidity data and print out charts showing plant growth under different conditions.

*“The students asked such thoughtful questions about how*

*technology can support plant growth,”* Jenn said. *“Those conversations showed me how important it is to connect science education with hands-on learning.”*

In June, Jenn was offered a permanent position with GHV as Curriculum and Technology Assistant, working with Becky Finnegan, head of the Curriculum Committee. She also took a position as Volunteer Coordinator with Operation Food Search, a key GHV partner. She is excited to continue expanding the use of technology in the curriculum to enrich student experiences.



**Bella Ottolini** joined **THE GREEN HOUSE VENTURE** as a summer intern in May. Born and raised in St. Louis' Shaw neighborhood, Bella attended St. Margaret of Scotland School, one of the GHV Alliance Schools, and later Nerinx Hall High School. Now a rising senior at the University of Colorado Boulder, she is double majoring in Environmental Studies and Sociology.

*“It’s amazing to see how the science program has evolved since I was a student here,”* Bella said. *“We didn’t have anything as extensive back then. I love seeing kids now get the chance to learn about gardening, nutrition, and sustainability in such an interactive way.”*

Bella found out about the summer internship through her family's close connection with GHV president, **Tom Purcell**. Her work focused on the Terrace Garden, where she spent four hours a day, four days a week watering, weeding, and assisting AMEN St. Louis youth ministry groups in their volunteer efforts. She also represented GHV at the Missouri Botanical Garden's Green Living Festival.

*“I really enjoy teaching kids about urban agriculture,”* she reflected. *“It’s important for them to understand how their actions impact the environment around them.”*

Both Jenn and Bella embody the mission of **THE GREEN HOUSE VENTURE** to educate, empower, and inspire. Their commitment ensures that St. Louis students continue to grow – not only vegetables and herbs, but their own sense of possibility and purpose.

## MAINTENANCE OF TERRACE GARDEN & ENTRANCE GARDENS



This season's high amount of rain has contributed to excessive weeds in the Terrace and Entrance Gardens. We have caught up with removing most of the weeds in both spaces.

The volunteers from both Master Gardeners and AMEN St. Louis provide a much needed service for Green House Venture. The Master Gardener group's work is coordinated by **Holly Records** and is usually posted on a weekly Master Gardener announcement.

**Heather Oplt** with Native Landscape Solutions continues to do a good job of maintaining the entire Embankment Greenway. Many of the wild flower and natives that were planted this past Spring are now showing their color.

Grass in front of the Terrace Garden and both Entrance Gardens continues to be cut on a regular basis, as well as the building site property at the Southeast corner of DeTonty and Lawrence.

Routine watering for the Terrace Garden and Entrance Gardens has been effectively covered. Watering schedules are increased as the temperatures get hotter and we have reduced precipitation.

Trap rock gravel for the pathways is being replenished by Fick Supply, who also supplied the Leaf Mulch for **THE GREEN HOUSE VENTURE** earlier this Spring.

# URBAN EDUCATION ALLIANCE AND COMMUNITY PARTNERS

**THE GREEN HOUSE VENTURE** thrives on partnerships with four unique schools, each with its own distinct approach and background. These schools don't typically have opportunities for collaborative projects through their regular programs. However, through **THE GREEN HOUSE VENTURE**, they are finding success in working together.

While these schools vary greatly in background, policies, and even curriculum, we have found that the students at all four are enthusiastic and highly motivated. With approximately 1500 participating students, our group is incredibly diverse in terms of socio-economic background, race, and ethnicity. The teachers from these schools are exceptional educators, deeply committed to the well-being and education of their students.

**THE GREEN HOUSE VENTURE** offers a remarkable opportunity to provide high-quality educational experiences to such a diverse group.

Our Community Partners further enrich these experiences. The St. Louis Zoo, Missouri Botanical Garden, USDA, Danforth Science Center, and St. Louis Community College are all committed to providing authentic, real-world experiences for our students.

Here is a glimpse of what is planned:

- **LAFAYETTE** is planning a visit from the Zoo in the fall and will have ecology lessons from the Missouri Botanical Garden in the spring.
- **MULLANPHY'S** fourth graders will visit the USDA trail and tunnel in the fall to learn about soil health. Six classes will visit the Zoo to study lemurs as pollinators and explore the nature of science and classification. "Animal Champions" and "Owl Pellet Dissection" activities are planned for the winter.
- **ST. MARGARET OF SCOTLAND** will also host the USDA for lessons on soil health in the fall and will welcome scientists from the Missouri Botanical Garden to discuss plant-related topics. A visitor from the Zoo will lead discussions on animal adaptations and behavior.
- **TOWER GROVE CHRISTIAN** will have a Zoo scientist visit classes in the fall to talk about insects and spiders. Later in the year, they hope to have the St. Louis Community College's Science van visit to enhance their lab skills.
- We are all planning for sixth-grade teachers from our schools to connect with the Danforth Science Center to explore potential participation in authentic research projects.

As those activities show,  
the Community Partners  
make a vital contribution  
to everything that  
GHV has to offer.



# A DECADE OF DEDICATION:

## Honoring Donald Stump's Enduring Legacy at THE GREEN HOUSE VENTURE

After 10 years of visionary leadership, **Dr. Donald Stump**, Saint Louis University professor and co-founder and Vice President of **THE GREEN HOUSE VENTURE**, is stepping down from his formal role—though not from his passion for the Venture's mission. Since 2015, Don has been a cornerstone of the organization, helping guide its growth and inspiring countless young minds along the way.



Though he is retiring from his executive duties, Don will remain deeply involved with GHV. He will continue to support educational initiatives serving on the Curriculum Committee and assist with hands-on student projects like the Hallway Experiments and cold-frame gardening. He also will contribute his expertise in aquaponics to the development of the new greenhouse

experimental learning stations along with other important technology that will be part of the new Education Center, which Don helped to design.

His enthusiasm for working with the students and teachers of our Urban Education Alliance remains as vibrant as ever. *"Don has been a tireless force,"* says **Tom Purcell**, President of the Green House Venture. *"Whether it's curriculum development, community partnerships, or just picking up a hammer to build our cold-frames, he's always there—with insight, energy, and a deep belief in our innovative program."*

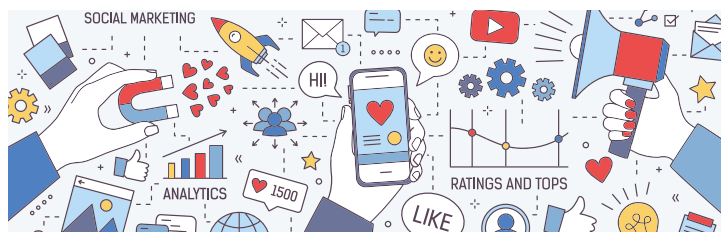


Don's initial interest in **THE GREEN HOUSE VENTURE** goes back his work from 2011-2015 when he headed up a group of faculty and administrators at Saint Louis University to design an education and outreach greenhouse to teach science and improve nutrition for under-served elementary-school students.

Don's many contributions to the Venture range from founding the organization alongside Tom Purcell, to establishing a robust intern program, pioneering a unique science curriculum, leading the Community Partners Program and many more too numerous to mention. His leadership helped bring in vital support from Saint Louis University and forge partnerships like the ones with Master Gardeners, Operation Food Search and others.

Beyond his professional accomplishments, Don is known for his generosity, creativity, excellent writing and his ability to connect with people across roles and backgrounds. He is someone who welcomes new ideas and inspires everyone else associated with this remarkable, thriving organization.

*"It's been a privilege to work with Don,"* said Tom Purcell. *"His impact will be felt for years to come, and we're lucky that he's staying close to help guide our next chapter."*



## GROWING AWARENESS

It's been a banner year for raising people's awareness of the great work we are doing with **THE GREEN HOUSE VENTURE**. Here are some highlights of activities that are putting our remarkable program in the public eye.

The Media Committee is generating excellent news coverage that's being passed on to everyone associated with the Venture, including patrons, volunteers, contributors, businesses, prospective donors and more. *(See additional information in accompanying story).*

We participated in the popular annual **Shaw Art Fair**. With help from volunteers and Master Gardeners, we attracted dozens of people to our booth who were enthusiastic about the work we are doing. A number of people signed up to receive more information and offered to serve as volunteers.



We also took part in the **Green Living Festival** hosted by Missouri Botanical Garden's EarthWays Center, an event that lets visitors explore the links between sustainability and a healthy environment. Attendees received tips and advice on how to make their lifestyle, workplace, community and residence greener.

Our list of followers/subscribers continues to grow on our social media platforms, with the following numbers as of July 2025

FOLLOW US ON SOCIAL MEDIA



Facebook (456)  
LinkedIn (316)  
Instagram (365)  
YouTube Channel (5)

Our website remains the foremost source of information for the public to learn about our work, including our ever-expanding library of videos and photos. We continue to work with our web master, **Studio 2108**, to add more features and information for visitors to the site.



We participated in **Give STL Day** for the 6th year in a row. This year's program raised \$4,441 in on-line donations, bringing our 6-year total to \$23,040. *(See more detailed information in Finance section).*

We are tremendously grateful for the continued support we get from the remarkable **Andy Dyer**, who generously donates his time and creativity to the design of our annual reports and other GHV materials.

# GROWING FORWARD CAMPAIGN UPDATE

Over the past year, we have achieved tremendous momentum in our Growing Forward Campaign!

Thanks to the extraordinary generosity of our supporters, we have secured a \$500,000 matching challenge grant from the **J.E. and L.E. Mabee Foundation**. This milestone brings us significantly closer to realizing our vision of constructing the new Education Center—the final phase in creating the transformative Green House Venture (GHV) campus.

Since its founding in 1948, the Mabee Foundation has awarded over \$1.6 billion in grants dedicated to capital projects and major medical equipment in Texas, Oklahoma, New Mexico, Arkansas, Missouri, and Kansas. To fully unlock this challenge grant, we must raise the remaining \$1.5 million by April 2026. Beyond funding, this commitment lends powerful credibility to our project and brings real and critical resources into our state.

Including the Mabee Foundation award, we have now secured \$3.2 million toward our capital goal—leaving \$2 million to go. This success builds on our fundraising track record, as GHV has also raised over \$1 million in operational support since its inception.

The new Education Center will be truly innovative. Equipped with advanced broadcasting technology, this facility will enable GHV to expand its reach beyond our Urban Education Alliance schools, delivering scalable, hands-on science education to students from elementary through middle school. It will position GHV as a leading educational resource in plant science, urban agriculture, and nutrition—setting a model of excellence that others can replicate.

We invite you to be part of this exciting journey. Whether you are a first-time donor or a long-time supporter, your contribution will help bring this vision to life. GHV's collaborative approach opens doors to an innovative educational experience for countless young learners—especially those who might otherwise never have access to these enriching opportunities.

If you would like to support GHV's vital mission or know someone who might be, our leadership team would be delighted to talk with them about our extraordinary program. We invite you to tour our facilities and learn more about our work through presentations for your group or organization.

Your passion and support are essential to advancing this extraordinary educational program, helping us nurture the next generation of scientists enthused and equipped to ensure the future health and sustainability of our planet.

To learn more or explore how you can help, please contact **Dan Reynolds** at [dreynolds@holmesredford.com](mailto:dreynolds@holmesredford.com) or **314-308-8038**.

***Thank you for believing in the power of education and growth. Together, we are Growing Forward!***



## GHV FINANCIAL UPDATE

**THE GREEN HOUSE VENTURE** continues to attract significant interest in funding its growth. We have received a total in donations and pledges of \$2,662,891 through our Growing Forward Campaign, specifically for the construction of our Education Center. Notable contributions this past year included a \$1 million gift and three donations from charitable foundations totaling \$120,000.

In addition, donations for ongoing operations from our inception through June 30 of this year have reached \$994,503. Operational expenditures this year focused on revamping the computerized growth chambers, curriculum development and the maintenance of our magnificent Terrace Garden, which has attracted widespread attention and provided extraordinary learning opportunities for our students.

**That brings total donations raised since our beginning to \$3,657,394 - an impressive investment in an innovative Venture for which we are deeply grateful.**

With the help of our fundraising consultants, we are continuing to make inroads with organizations and individuals who can contribute the capital needed to begin construction on the planned Education Center, which will be the crown jewel of the GHV Campus. These efforts resulted in securing a challenge grant of \$500,000, which will be awarded to the GHV once the fundraising challenge is reached.

For the past six years, **THE GREEN HOUSE VENTURE** has participated in the region-wide fundraising program called "Give STL Day." This year, we received \$4,441, bringing our 5-year total to \$23,093. During this period, the GHV was recognized and awarded an additional \$500 from the St Louis Community Foundation in their STEM Mission Category. That's an exciting accomplishment that not only provides important financial support, but also raises awareness of the Venture's work throughout the community.



# NEWS MEDIA COVERAGE INCREASES

Coverage of **THE GREEN HOUSE VENTURE** by a wide variety of St. Louis news media continued to grow this past year, with a steady stream of in-depth feature stories about our successful programs and student activities reaching more readers, viewers and listeners than ever before.

**Craig Workman** of Workman Communications Group, working with the Media Committee, has supported the Venture's fundraising efforts by generating positive newspaper, magazine, television and radio coverage and raising the public's awareness of the innovative work we are doing to inspire and educate our students in the fields of nutrition, bio-science and urban agriculture.

Highlights of recent news coverage include the following stories:

## ST. LOUIS BUSINESS JOURNAL

*Nonprofit looks to build \$4.7M STEM center after completing educational garden*

## LADUE NEWS

*Collaboration with MoDOT converts roadside into community garden*

## KWMU-FM (NPR)

*UMSL biologist launches multi-year bee pollination study at Embankment Greenway*

## SAUCE MAGAZINE

*St. Louis students plant seeds of change through Green House Venture*

## KETC-TV (PBS)

*Students learning about bee pollination with UMSL bee study team*

## ST. LOUIS AMERICAN

*Diverse students learning about produce cultivation at Terrace Garden*

## KSDK-TV

*St. Louis students grow skills in unique garden initiative*

## ST. LOUIS POST-DISPATCH

*Operation Food Search produce harvest*

**Links to some of these stories can be found here:**



[New project converts roadside into thriving community garden | Ladue News](#)

[UMSL will investigate pollinator activity at a roadside garden | STLPR](#)



[Tower Grove Christian Academy students plant community urban garden | St. Louis American](#)

[St. Louis students grow skills in unique garden initiative | ksdk.com](#)



## EDUCATION CENTER UPDATE

**Hercules Construction Management** has been hired as the Green House Venture's owner representative for construction of the new Education Center. They will oversee all activities of the construction reporting to the GHV board.

**Bush Construction (formerly UIC)** has finished final design, and construction is scheduled to start this September with a planned completion date of fall of 2026. Bush is getting the necessary approvals and permits from the City of St. Louis and various utilities.

The neighborhood organizations have approved the building and the Shaw community is excited about the GHV education building completion.

One of the most prominent features of the 9,400 square-foot facility is our state-of-the-art multi-media capabilities providing the technology for collaboration and partnerships with different schools in the St. Louis region and others across the country.



## BOARD OF DIRECTORS

Thomas Purcell, *President*  
 Peter Benoist, *Vice President;*  
*Co-chair, Site committee*  
 Dennis Purkis, *CPA, Treasurer*  
 Jack Connaghan, *Secretary;*  
*Co-chair, Marketing committee;*  
*Director of Technology*  
 Kurt Keister, *Co-chair,*  
*Site committee*  
 Becky Finnegan, *Chair,*  
*Curriculum committee*  
 Dawn Nemanick, *Co-chair,*  
*Marketing committee*  
 Laura Moore  
 Kelly Casper, PhD  
 Michael Gregory  
 Patrick Holley  
 Nicole Niewald  
 Molly Schaller, PhD  
 Sanjiv K. Bhatia  
 Michelle Duffe  
 Jacqueline Davis Wellington  
 Colleen Starkloff  
 Freddie E. Wills, Jr.  
 Ben Johnson  
 Nicole Mohler  
 Donald Stump, PhD, *retired*  
 Elizabeth Boedeker, *retired*

### GHV Operational Changes and Additions for 2025

#### Jack Connaghan

Currently, Board Secretary

Going forward, he also will serve as Director of Technology. This added responsibility addresses the incorporation of technology for the Education Center and the increased focus on technology for the GHV curriculum.

#### Becky Finnegan

Currently, member of the Curriculum Committee

Going forward, she will serve as a Board member and Chair of the Curriculum Committee. Becky's professional career as an educator and two terms as a principal in the parochial school system will be an exceptional asset to the program.

#### Peter Benoist

Currently, a GHV Board member and Chair of the Site Committee for the past 6 years

Going forward, he will be Vice President of Board of Directors. Pete's depth of knowledge and experience in the building industry is essential throughout the construction phase of the GHV Education Center.

#### Laura Moore

Appointed to GHV Board as representative from St. Louis Community College, replacing Elizabeth Boedeker who is retiring.

## KEY PARTNERSHIPS

*The following organizations contribute an array of services to expand awareness of THE GREEN HOUSE VENTURE, to promote our mission, and to ensure that the GHV Campus is maintained throughout the year.*

- Tower Grove Park
- Operation Food Search
- Forest ReLeaf of Missouri
- Saint Louis Zoo/  
Coahoma Orchard
- Saint Louis University and  
Department of Biology
- Washington University
- University of Missouri—St. Louis
- Harris-Stowe State University
- St. Louis Community College
- Saint Louis University  
High School
- Switch
- AMEN St. Louis
- Focal Pointe
- St. Louis Chapter of Master  
Gardeners
- St. Louis Chapter of the Wild Ones
- City of St. Louis Water  
Department
- Missouri Department of  
Transportation (MODOT)
- Missouri Department of  
Conservation
- Danforth Plant Science Center
- DTLS Landscape Architecture
- Shaw Neighborhood Improvement  
Association (SNIA)
- Shaw Nature Preserve
- Tower Grover Neighborhood CDC
- Brake Landscaping Service
- Hercules Construction  
Management Company
- Native Landscape Solutions
- Urban Improvement  
Construction (UIC)
- Wild Carrot
- The Dogwood
- Studio 2108
- Arbor Group
- Andrew Dyer
- Holmes, Radford & Reynolds
- Landes & Associates
- Purkis CPA
- Workman Communications Group

## THE CAMPUS DONORS

- John and Joan  
Vatterott Family  
Foundation
- MySun Foundation
- Wayne C. Kaufmann  
Charitable  
Foundation
- YouthBridge  
Community  
Foundation
- Thad Simons/  
NOVUS
- Ameren
- Wells Fargo
- Bernard Purcell
- Thomas and  
Virginia Purcell
- Great River  
Confluence
- Terry Donohue
- Green House  
Venture Directors
- Kerr Foundation
- Jordan Charitable  
Foundation
- Saigh Foundation
- Cardinal Care
- Purcell Family Trust
- First Bank
- Gary Pohrer
- SNIA –  
Helping Hands
- St. Louis  
Philharmonic
- American Heart  
Association
- Michael Shean
- Lee Kling
- John Rick
- KWS
- John Nickel
- Chris Adelman-Adler
- Jack Lane
- William Duffe
- GiveSTL Campaign
- Bob St. Vrain
- Matt Villa
- William F. Siedhoff  
Foundation
- Nickel Family
- Villa Lighting
- Viragh Family  
Foundation
- Bellwether  
Foundation
- Heses Charitable  
Trust
- MySun Foundation
- St. Louis  
Philanthropic
- Mary Ucinski
- John Brandvein
- St. Louis Rotary Club
- Becky Finnegan
- Vic Jost
- Cheryl Purcell
- Debra Pyzyk
- Rick Kacenski
- Robert Kochan
- Gerri Lashley
- Thomas McDonough
- Raven Development  
c/o David Glarner
- Joan Vatterott